

# Warm-Up

Which rule would I need for this?

*There were 230 roses growing in the back garden. If 50% of the roses were red. How many were red?*

1. 

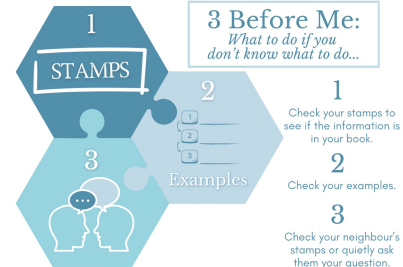
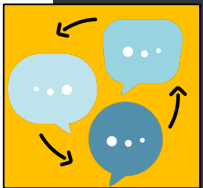
$$\text{whole amount} = \frac{\text{amount}}{\text{percent}} \times 100$$

2. 

$$\text{Percentage} = \frac{\text{amount}}{\text{total}} \times 100$$

3. 

$$\text{Percentage of a number} = \frac{\text{percentage}}{100} \times \text{number}$$

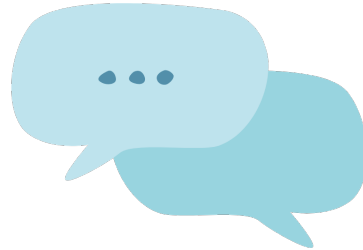




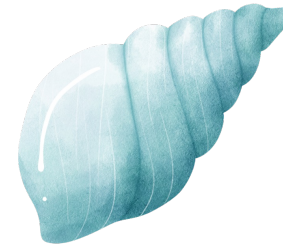
# PowerPoint Cues



Writing



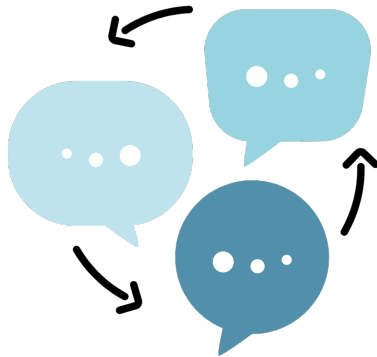
Turn and Talk



Active Listening



Silent Solo



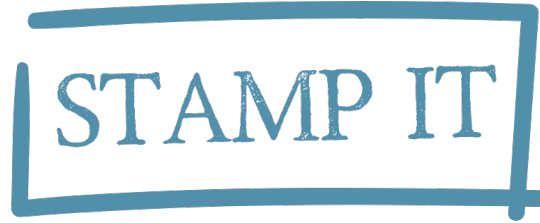
Class Discussion



Document Camera



Show Call



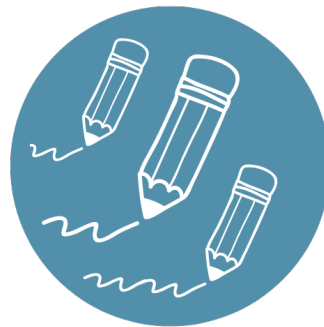
Stamp It



Poll



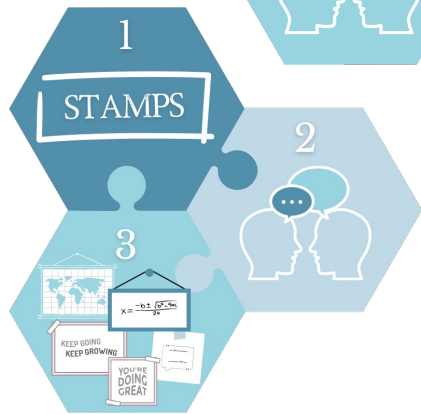
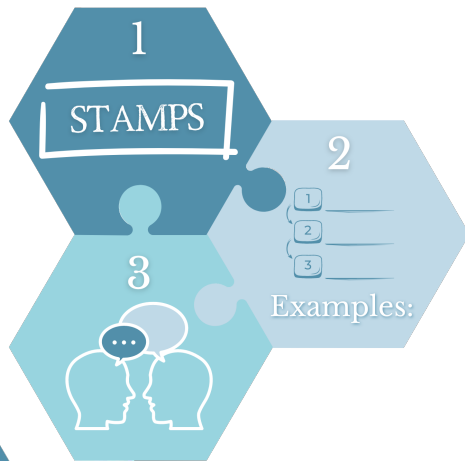
Cold Call



Everybody Writes



Choral Response



3 Before Me



Non-Verbal  
Participation



All Hands

